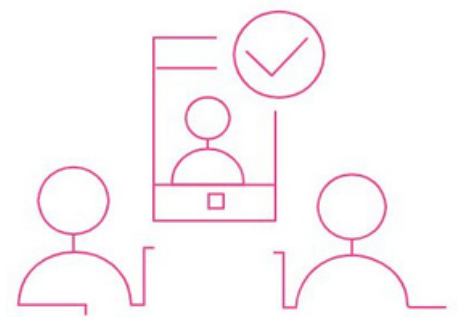


# Get ready to 'moodle'

<https://project-reset.eu>



# What is moodle?

Moodle stands for "Modular Object-Oriented Dynamic Learning Environment." It is a web-based learning management system (LMS) that provides teachers with a platform to create and manage online courses and assessments.

Moodle is a free and open-source learning management system (LMS) used by educators and trainers to create and manage online learning environments. It is designed to provide a flexible platform for delivering educational content, resources, and assessments to students or learners.

Moodle provides a range of features and functionalities, including course creation and management, assignments and quizzes, discussion forums, collaboration tools, and multimedia integration. It also supports tracking and reporting of student progress and provides tools for communication and feedback between instructors and learners.

## What are the benefits of open source?

**Cost-effective:** Open-source software is free and typically has no licensing costs, which can save organizations a significant amount of money compared to proprietary software.

**Flexibility:** Open-source software is highly customizable, and users can modify the code to fit their specific needs and requirements.

**Collaboration:** The open-source community is made up of developers and users from all over the world, who work together to improve the software and add new features.

**Quality:** Open-source software is often of high quality, as the code is open to scrutiny and review by the wider community, which helps to identify and fix bugs and security issues.

**Security:** Open-source software is often considered to be more secure than proprietary software, as the open-source community is able to identify and resolve security issues quickly.

**No vendor lock-in:** Open-source software does not lock users into a particular vendor, allowing them to switch to another solution if they are not satisfied with the software or the vendor's support.

**Freedom:** Open-source software provides users with the freedom to use, modify, and distribute the software, subject to the terms of the open-source license.

-Overall, open-source software can offer organizations a cost-effective, flexible, and secure alternative to proprietary software, while also promoting collaboration, quality, and freedom.

## How do I get moodle?

The software is free (open source) but there will be costs for Hosting, upgrades, and maintenance.

### To get Moodle, you can:

- Go to the Moodle website (<https://moodle.org/>), download the software package and install it on a self-owned server (done by local IT department)

Or

- Use a Moodle Partner to host it for you. If you are using a Moodle Partner to host your site, they will typically handle the installation and configuration process for you. You'll simply need to provide them with the information they need to set up your site and then start creating courses and enrolling users.

# Get started

Moodle is built to embrace the philosophy of social constructionism in learning. This approach emphasizes interaction and the belief that individuals learn best through interaction with learning materials, co-creation of new knowledge, and discussion with peers. It represents a departure from the traditional lecture-style approach to education.

Have this in mind when moodle is configured and digital courses are designed.

Follow these four steps to get started:

## **Step 1- Configuring Your Moodle Site**

The choices you make during the installation and configuration process of Moodle will have a significant impact on the user experience for all stakeholders, including students, teachers, course creators, and site administrators. This includes factors such as the layout and design of your site, the availability of specific features and tools, and the ease of use for different user groups.

All the necessary documentation to get started, configure your site, and create courses on Moodle can be found on Moodle Docs.

## Step 2 - Organize Your Learning Environment

To organize the learning platform, the following approach is recommended:

- **Create Course Categories:** Start by creating categories for your courses, which will provide a structure for organizing your courses. You can create categories for different subjects, departments, or any other grouping that makes sense for your organization.
- **Create Courses:** Once you have created categories, you can then create courses within those categories. When creating a course, you will have the opportunity to specify various course settings such as the course format, start date, and enrollment options.
- **Customize Course Settings:** Moodle provides various options for customizing the course environment, such as setting course format, enabling or disabling course activities, and adding teachers and students to the course.
- **Manage User Enrollments:** You can also add teachers and students to courses, and manage their enrollments as needed. Moodle provides various options for enrolling users, such as self-enrollment, manual enrollment, or bulk enrollment.

### **Step 3 - Add learning activities in moodle**

In Moodle, you can add a variety of content to your course, such as web pages, text, graphics, multimedia, games, and exercises.

To make the course interactive, you can add activities such as lessons that guide students through a defined path based on their answers to review questions, assignments that students can upload and be graded by the teacher, and quizzes to evaluate student knowledge.

To enhance the social aspect of the course, you can add chats and forums for student-to-student interaction. Collaborative activities such as wikis and glossaries can also be added, allowing students to work together to create new material.

In Moodle, you can integrate external tools like Microsoft Word, Excel, and Zoom to enhance the learning experience for your students. These tools can be added as activities within Moodle and allow students to access them directly from the Moodle platform. This integration enables students to easily access and use these tools as part of their coursework, making the learning process more seamless and efficient.

For example, Microsoft Word and Excel can be used to create and edit documents and spreadsheets, respectively, while Zoom can be used for virtual class sessions and online meetings. The integration of these tools can provide a more engaging and interactive learning experience for students, as well as offer teachers the opportunity to use different methods of instruction and assessment.

## Step 4 - Use it, and enjoy the benefits

To fully reap the benefits of Moodle, it is crucial for teachers to utilize the platform on a regular basis. The organization must provide training and support to ensure the teachers are equipped to effectively use the system. By using Moodle on a daily basis, teachers will discover a range of useful features and benefits like:

**Course creation and management:** Moodle allows teachers to create and manage online courses, adding course content, assessments, and activities in one centralized platform.

**Student engagement:** Moodle offers various tools for teachers to engage with their students, such as discussion forums, quizzes, and online assignments.

**Grading and tracking:** Moodle provides teachers with an efficient way to grade student assignments, track student progress, and monitor learning outcomes.

**Collaborative learning:** Moodle enables students to work together on projects and activities, such as wikis and group assignments.

**Resource sharing:** Teachers can share course materials, such as videos, PDFs, and audio files, directly with their students through Moodle.



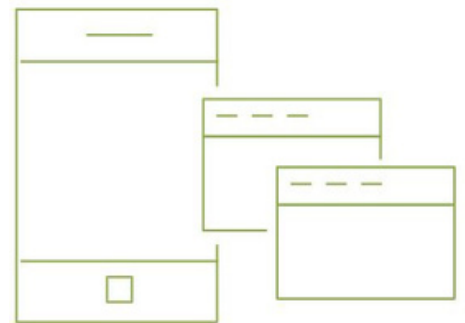
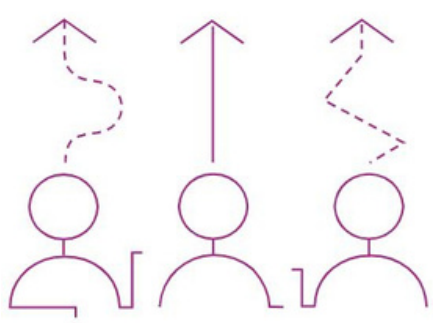
**Communication:** Moodle provides teachers with tools for communication with students, such as private messaging, news forums, and course-wide announcements.

**Analytics:** Moodle provides teachers with insights into student engagement, performance, and learning outcomes, allowing them to make data-driven decisions about their teaching practices.

**Mobile accessibility:** Moodle has a layout that is mobile-friendly and responsive, enabling teachers to manage their courses and communicate with students on-the-go.

**Customization:** Moodle allows teachers to customize the look and feel of their courses, including the ability to add custom branding and logos.

**Integration:** Moodle integrates with a wide range of third-party tools, such as video conferencing platforms, e-portfolio systems, and assessment tools, making it a versatile platform for modern education.



# Partners



<https://project-reset.eu>

